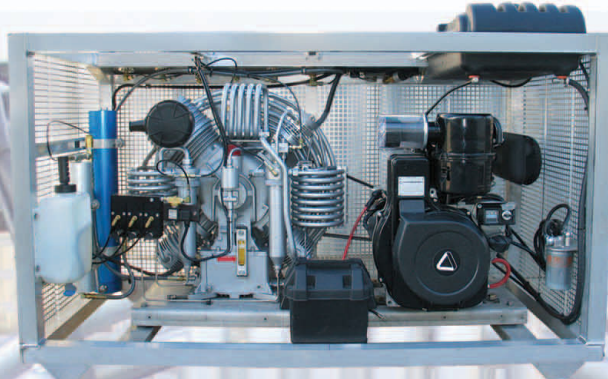


MCH 36 Diesel



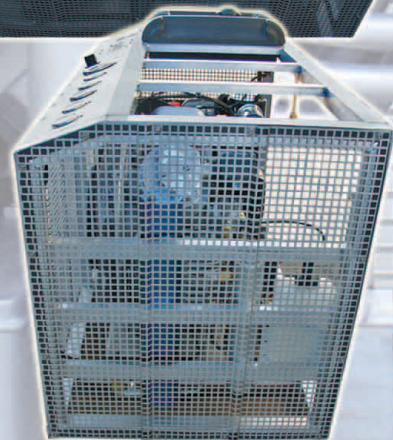
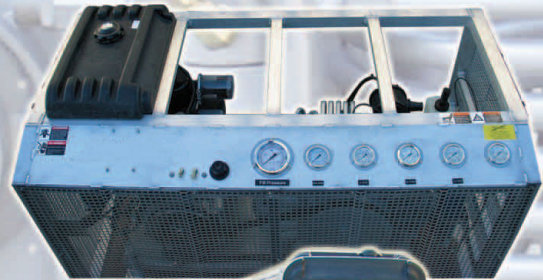
Features

- 26.4 SCFM (752 L/Min) High Pressure Compressor
- 4 Cylinder, 4 Stage, Air Cooled
- Visual CO / Moisture Indicator
- Hour Meter
- Interstage Pressure Gauges
- 3 Large Condensate Separators
- Large SS Interstage Cooling Tubes
- Low Pressure Oil Pump with Filter, Oil Level Sight Gauge and Oil Pressure Gauge
- Automatic Condensate Drains
- Loadless Start
- Low Oil Shutdown Switch
- High Temp Switch set at 350° F
- Dual Filter Filtration (60,000 Cu. Ft.)
- 6.5 Gallon Fuel Tank
- Electric Start
- 12 V 28 AH SLA Battery with Battery Box
- Aluminum Frame & Belt Guard with Lifting Eyes and Fork Lift Slots

Charging Rate.....26.4 SCFM, 22 FAD, 752 L/Min
Diesel Engine.....28.5 hp @ 3000 RPM
Max Op. Pressure.....6000 PSI (413 Bar)
RPM.....1250
Number of Stages.....4
Dimensions (LxWxH).....64 x 32 x 44 in.
Weight.....900 lbs.
Lubrication.....Pressure
Air Quality.....Grade "E"

Options

- Automatic Pressure Shutdown
- Presec Electronic Moisture Monitor
- Upgraded Filtration (90,000 Cu. Ft.)
- Remote Fill Panel
- Frame Mounted with Storage Tanks Below for Paintball Applications
- Large Base Mount Fuel Tank
- Digital CO Monitor



Terms and Conditions:

50% Deposit at time of order. Balance due prior to shipping. FOB Oxnard, CA USA. Specifications and price subject to change without notice.